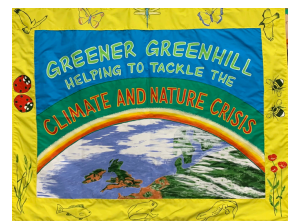


# Greener Greenhill

## Spring 2025



The **Greener Greenhill** network has continued to be active over the past year and we have had repair cafes, bird song walks, new benches, lots of planting, several talks and more. However, this newsletter is going to focus on the activities we undertook in relation to two Sheffield City Council funded Economic Recovery projects which we led on: **Growing Greenhill** and **Lowedges Boost**.

## Growing Greenhill

The purpose of the council's ERF grants was to 'boost the local high street' and **encourage more people to use local businesses**. The bid we put together with the support of local businesses focused firstly on making more residents aware of the fantastic range and depth of businesses in Greenhill and then on making the central area somewhere people wanted to '**linger for longer**' by improving the physical appeal of the area through new planting and art work.



We engaged consultants to work with local residents to build an idea of what it is that most people appreciate about Greenhill and overwhelmingly the responses were all about **friendliness and a strong sense of community** with the school, the churches and Greenhill Community Library at its heart, well served by the local shops and businesses. The 'Our Greenhill' brand and logo developed

from this and is now used on **banners**, in the businesses and for Facebook and Instagram pages.



There is a wealth of local services in Greenhill and, unlike many neighbourhoods, no empty units. A **directory of all our 'shop-front' businesses in Greenhill** was created including retail, cafes, health, beauty and wellbeing services, pubs and more. This directory was distributed as a pull-out leaflet within the Greenhill Community Library newsletter in August 2024 and is still widely available from the shops and businesses locally.

We were delighted at the way the directory drew people's attention to the lesser-known businesses such as the yoga studio, the bike repair shop and Renaissance (which sells high quality pre-loved clothing in the historic part of the village). The business information was also shared through a two-page spread in local publication **Active8**.



As an environmental group, we also wanted to encourage the idea of **walking to the shops and businesses**. The waymarker posts in three of our local green spaces, including a step count to the central marker on the library lawn encourage this. And the central post registers **Greenhill's place in the world** - we are a bit more than 53° north and 1.5° west!



**Greenhill**

#local shops #local businesses

## New Planting

The **Greener Greenhill** team have long wanted to help make the centre of Greenhill more green - no great surprise there, of course! The project funding allowed us to do this in a concentrated and thoughtful way and we were very pleased to have been able to engage the **Regather** Garden Services team to design the schemes. We wanted something that provided colour and cover, helped boost biodiversity, celebrated native plants as well as being relatively low maintenance and the schemes delivered all these things which is great.

### Roundabout planting



The central roundabout now has three kidney bean shaped beds planted as a **perennial meadow** - meaning that the mostly native plants will regrow each summer after being cut back each autumn. The plants will be left to drop their seeds before the beds are cleared for the winter, waiting for the spring bulbs to appear.

### Hazel mounds on the library lawn



### Community Planters

Another element of planting is the three community planters, filled with **herbs and soft fruit** whose flowers and leaves provide sustenance for pollinators and other insects. The herbs and soft fruits are then **available for people to pick and eat**, giving first hand experience for the children passing by of simple food growing



Using the turf taken from the roundabout three mounds were created on the **Greenhill Community Library lawn**, with each planted with a multi-stemmed hazel and a variety of native plants to create a perennial meadow scheme, again enhanced in the spring by bulbs.

### Community Engagement

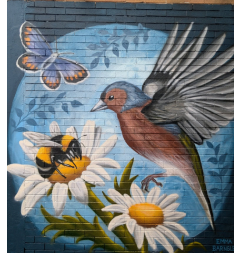
Teams of **volunteers** did most of the preparation and all of the planting for the new schemes (come rain and shine!) and many are involved with such maintenance as is needed either on 'work days' or in very small teams. Without this engagement, the project could not have delivered in the way that it has nor would the sense of ownership been as great.



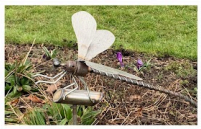
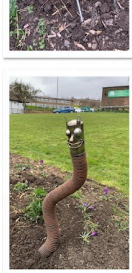
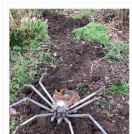
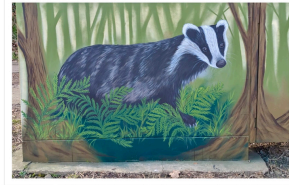
## New Artworks

To further enhance the physical appeal of our neighbourhood, we commissioned art work which once again reflected our core commitment to the environment.

**Local artist Emma Barnsley** developed and delivered beautiful paintings of native wildlife to cover six of the utility boxes in the area. Emma also created a striking mural for a wall opposite the door of the Greenhill Pharmacy



Emma took inspiration from local children for the creatures she chose and the paintings are a delight for children and adults alike. Each box has hidden creatures waiting to be found either behind or below the box.



The 'Growing Greenhill' wildlife theme was taken further by a series of sculptures created and installed for us by **scrap metal artist Jason Heppenstall**. In among the plants on the library lawn mounds are nine insect sculptures all made out of bits and pieces of scrap metal.

The skill, artistry and fun these demonstrate has generated a great deal of interest and admiration since their installation. Through the summer, the insects will increasingly hide among the plants but when the plants die back in the autumn, they will stand proud and provide interest throughout the winter and spring.

For another creature-themed artwork, specifically with our youngest residents in mind, we commissioned a set of **playground markings** on the open space behind the library and these are providing fifteen minutes of fun at regular intervals as the young ones go to and from to school and the library.



The space behind the library, most often used for the regular Greenhill Village Markets, now also has its own sign (**complete with cheeky ladybird**) and a final piece of art celebrates peace and prosperity for the Greenhill community.



The **Greener Greenhill** team were pleased to be able to develop and deliver this project for Greenhill. We hope that it encourages local people to enjoy and cherish the neighbourhood and to make even more use of the excellent range and depth of businesses we have here to enable them to continue to thrive as a local high street.

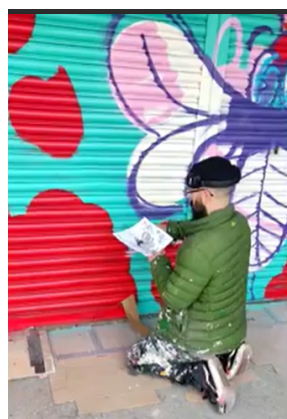
We thank **Sheffield City Council** for the funding which allowed our vision to be realised and for the support given to us by their dedicated ERF team.

# Lowedges Boost

The Lowedges ERF project was much smaller but was also designed to boost footfall - this time to the middle rank of shops on Lowedges Road. It was developed by the **Greener Greenhill** steering group in response to requests from members of the local community in order to ensure that Lowedges, too, could benefit from the funding on offer. We stepped up to do this when other local groups were too pressed to do so.

The privately-owned building had suffered from neglect for a number of years making it look unattractive and uncared for. Nearby were benches, bins and a community noticeboard in poor condition. Some of the units had changed hands several times over the years though some businesses, most notably Barkers the Bakers, remained hugely popular.

The key for these businesses was to **brighten up the whole area** both physically and metaphorically. The project-specific steering group agreed on funding replacement street furniture, upgrading the outside lighting and commissioning artwork, initially just for the shutters.



We had three responses to the tender for the art work and the steering group selected **Alastair Flindall** and his 'Neck of the Wood' collective.

Alastair had experience of **working with young people** to develop designs for a community and had often undertaken 'street art' projects. Working around the colours on an existing shutter, a bright design was created in workshops with a local youth group and subsequently extended to the pillars which were also graffiti covered. Business owners were also consulted about the designs for their particular unit. To complete the re-vamp, we negotiated to fund a **mural** on the end wall.

**New bins, new benches and a new noticeboard** have helped make the outside area more comfortable and the addition of better lighting under the canopy in front of the shops has been very much welcomed by business owners and shoppers alike. The project also funded new **Christmas lights** for the whole run of shops.



With careful use of the grant, and with the support of the **Sheffield City Council Parks and Countryside team**, we were able to plant 1000 low-growing spring bulbs in the area around the new seating and these flourished over an extended period between February and April. The local Tenants and Residents Association also installed large planters nearby, adding to and extending the colour.



**Greener Greenhill** were pleased to be able to contribute to both the Greenhill and the Lowedges communities by managing these projects and will watch their development with interest as we return to our more regular activities helping to combat the climate and nature crisis through local action. For more information on the activities of the network please:

- **Join our mailing list** to stay up to date with our plans and projects [greenergreenhill@gmail.com](mailto:greenergreenhill@gmail.com).
- **Follow us** on Facebook or Instagram [@GreenerGreenhill](https://www.instagram.com/GreenerGreenhill).
- **Take a look** at our website: <https://greenergreenhill.co.uk>.